

32 Pentrich Road Campsdrift Pmb
P.O .Box 101416, Kwa Zulu Natal, 3209
CK No. 2017/275220/07

I & C ENGINEERING
PTY LTD.

Company Profile

- ◉ **Our diversified business ranging from General steel fabrication, sheet metal, structural steel, Tanks, Silo's, Hoppers, chutes, conveyors, General pipe work and pump station piping.**
- ◉ **Our services also include High Definition Plasma cutting, Plate rolling, Edge rolling, Guillotine cutting and Bending.**
- ◉ We also specialize in Tank Repairs, NDT testing, Quality Control services, Sand Blast & Painting. Offering our clients a variety of services
- ◉ **We offer turn key assistance with professional advice and back up to our clients. This professional team range from Architects, Structural & Civil Engineers, Mechanical & Electrical Engineers, Civil Contractors, Environmental Assessors etc. It is with this diversity that we truly hope we can be of assistance to you.**
- ◉ **In the fabrication division of our operation we have manufactured small steelwork sections, to SABS Chemical Frames, single and double jacketed tanks, to structural steelwork, conveyors, silos and have also manufactured numerous stairways, steel floors, handrails, canopies, lifting beams, cast in items etc. We also do work in close relation with Umgeni Water & Group 5, Manufacturing of Pipes, Stainless steel Screens, Pipe support Brackets, Pump station piping, Ducting etc.**
- ◉ **We take great pride in our quality of our products, setting a high standard in our industry which gives our client piece of mind and creating long term relationships.**

Piping systems



Pump
stations



Valve
systems

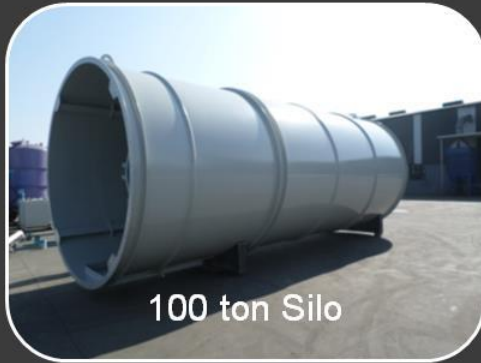


Fire water
piping



Sprinkler
systems

Silo's and Hoppers





ASSMANG RABBLER
RING





Gypsum Conveyor



Gypsum Conveyor



Hulamin feed conveyor



Chute



24m Crusher conveyor



50m³ storage tank

Turnkey Projects



200 000 litre Vessel
Installation



34000 litre LP Gas
Vapouriser
Installation



90 000 litre Vessel
Installation



46 000 litre Fuel
Tank Installation

Turnkey Projects

- **Phalaborwa Mine – Liquid Petroleum Gas Plant Upgrade**



Turnkey Projects

- Tycon Properties Factory Project



Access Stairways & Platforms



Split Level
Stairways



Walkover Stairways



Stairway with
Platform



Basement Access
Stairway & Platform

Fabrication & Mechanical Projects



Machine Bases



Machine Bases



**2 Ton Tank
Stirrer**



**30 Ton Tanks
Stirrer**



Fabrication & Mechanical Projects



Foil Annealing
Furnaces



Coil Annealing
Furnace & Cooling
Racks



Mild Steel Internal
Cladding



3 CR 12 Internal
Cladding

Fabrication & Mechanical Projects



Thermal Oil Piping
Claded



Cooling Tower &
Pump Station



Reticulation Piping



HDPE Piping

Fabrication & Mechanical Projects



Lime Silo



Stone Hoppers



Stone
Conveyor



Dust Extraction
System



Keystone Hatchery trolleys



Keystone Hatchery trolleys



Keystone Hatchery trolleys



Merensky conveyors



Merensky conveyors



Merensky conveyors



Water storage tank
Pipe & Nozzles



Water storage tank
Pipe & Nozzles



Anti-Vortex Pipe



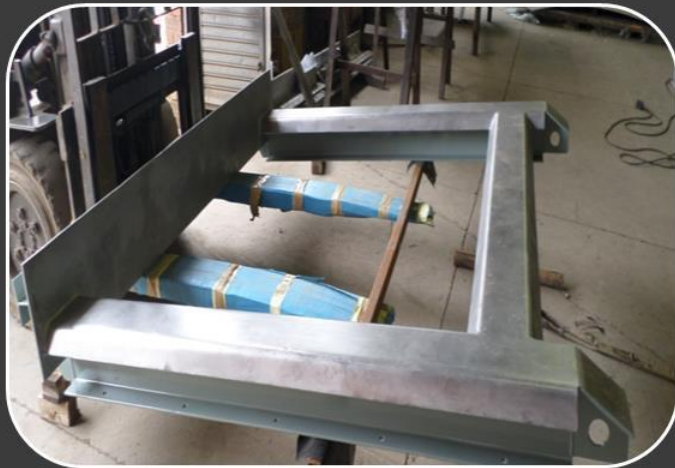
10m Tank Roof
truss



316ss Guides



316ss Screens



316ss sealing frames



316ss Screens

48m STACK



Company Mission Statement

- **The Business:**

- **Our core business is LP Gas, Petrochemical Installations, General Engineering, Fabrications and Mechanical Installations in South Africa & Neighboring States.**

- **The Objectives:**

- **We aim to be leaders in our related industries to ensure a suitable return on investments and to enhance the capabilities of our employees such that their full potential is utilized.**

- **The Standards:**

- **We strive to meet customer expectations of Quality, Delivery, Price and Responsiveness at all times.**

- **Our Values:**

- **We believe in free enterprise, benefits of competition and enhancement of the Company's image as a market driven Company by creating a culture of:**
- **Always satisfying customer expectations**
- **Commitment to quality**
- **Customer Service**
- **Commitment to safe working practices**
- **Integrity and ethical behaviour**
- **Sense of urgency**
- **People orientation and teamwork**
- **so as to create a stable, stimulating work environment where productivity, loyalty, pride and work satisfaction is fostered.**

- **Address: 32 Pentrich rd, Campsdrift , Pietermaritzburg**

- **Contact : Etienne Pretorius , 0818002032**

- **Email: etienne@install-const.co.za**